

ERRATUM

Volume 4(2): 119–155

Tertiary giant lacewings (Neuroptera: Polystoechotidae): revision and description of new taxa from western North America and Denmark
S. B. Archibald and V. N. Makarkin

During the preparation of the final, published and online versions of the above article, errors were introduced into figures 3 and 18 where pre-revision versions were used in place of the final versions.

We apologise to the authors and readers for these errors and reproduce the correct version of the figures below.



Figure 3 Early Eocene intercontinental dispersal routes between Europe and North America open to *Palaeopsychops*: across the northern Atlantic route (most likely, dotted line) or across Asia via Beringia (but note Obik Sea barrier). Reconstruction of Early Eocene continental and shoreline position, redrawn from Hooker & Dashzeveg (2003), modified from Smith *et al.* (1994) and Bonde (1997). De Greer and Thulean land bridges may not have been open at the same time. **A**, Fur Formation; **B**, De Greer Land Bridge; **C**, Thulean Land Bridge; **D**, Okanagan Highlands; **E**, Florissant; **F**, Obik Sea; **G**, Bering Land Bridge; **Eur**, Europe; **Gr**, Greenland; **N Am**, North America.

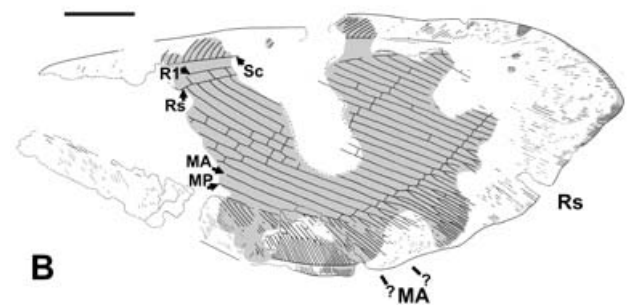
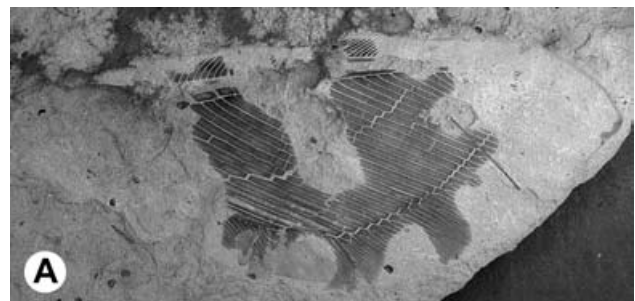


Figure 18 *Palaeopsychops douglasae* sp. nov., holotype, UA, UAFIC7794; hind-wing. **A**, photograph of counterpart; **B**, combined drawing from part and counterpart. For abbreviations see Materials and Methods. Both to scale; scale bar = 5 mm.